


4.4.2 – Procedures and policies for maintaining and utilizing physical, academic and support facilities - laboratory, library, sports complex, computers, classrooms etc. (maximum 500 words) (information to be available in institutional Website)

Our College has established systems and procedures for maintaining and utilizing physical, academic and support facilities - laboratory, library, sports complex, computers, classrooms etc. The College has some procedures and practices for maintaining and utilizing the facilities and resources available in the campus. These procedures guide the Staff members to follow certainty in utilization of facilities available to them for academic and non-academic activities. The ITC facilities of the College are effectively maintained by an AMC with TLS Services, Madurai. There are two electricians permanently working in the College and they undertake all electrical and plumbing related works. There is sufficient number of supportive Staff to maintain and clean the Campus, class rooms and furniture and all such activities are coordinated by the Superintendent of the Administrative Office. The Council Manager schedules the work to the supportive Staff and supervises whether the work is carried out properly and regularly. Sometimes, maintenance of the class room is done by outside workers. In the Library, the library Staff members regularly maintain the stocks and maintain cleanliness and create a conducive atmosphere for the students and teachers to dwell deep into the treasure of books. There is an agreement with ROVAN Software Systems to maintain the Library software periodically. The Department of Physical Education is continuously adding laurels to the College. The equipment available in the Department and the play grounds is maintained by the marker and a management

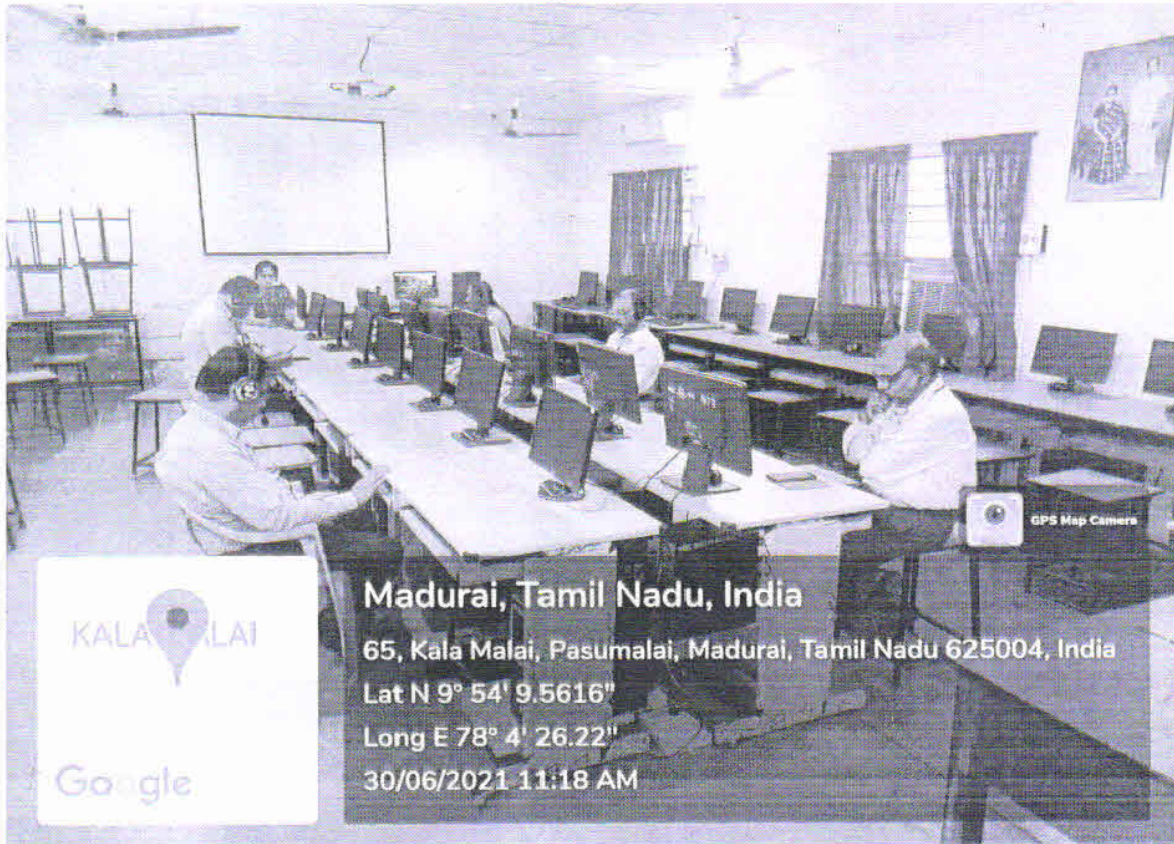

PRINCIPAL (i/c)
SOURASHTRA COLLEGE
MADURAI - 625 004

Staff. The running track field is also used for playing cricket and football. CCTV camera is installed in various locations of the College to monitor routine happening in the campus. There is a register in the Principal's room to record Staff grievances regarding maintenance of things and equipment. Science laboratory equipment is maintained by the lab Staff and if needed they utilize outside services too. When the equipment and instruments get fault, they can be repaired or replaced with the permission of the Principal. A gardener is appointed by the Management to nurse and nurture the plants and saplings in the campus.

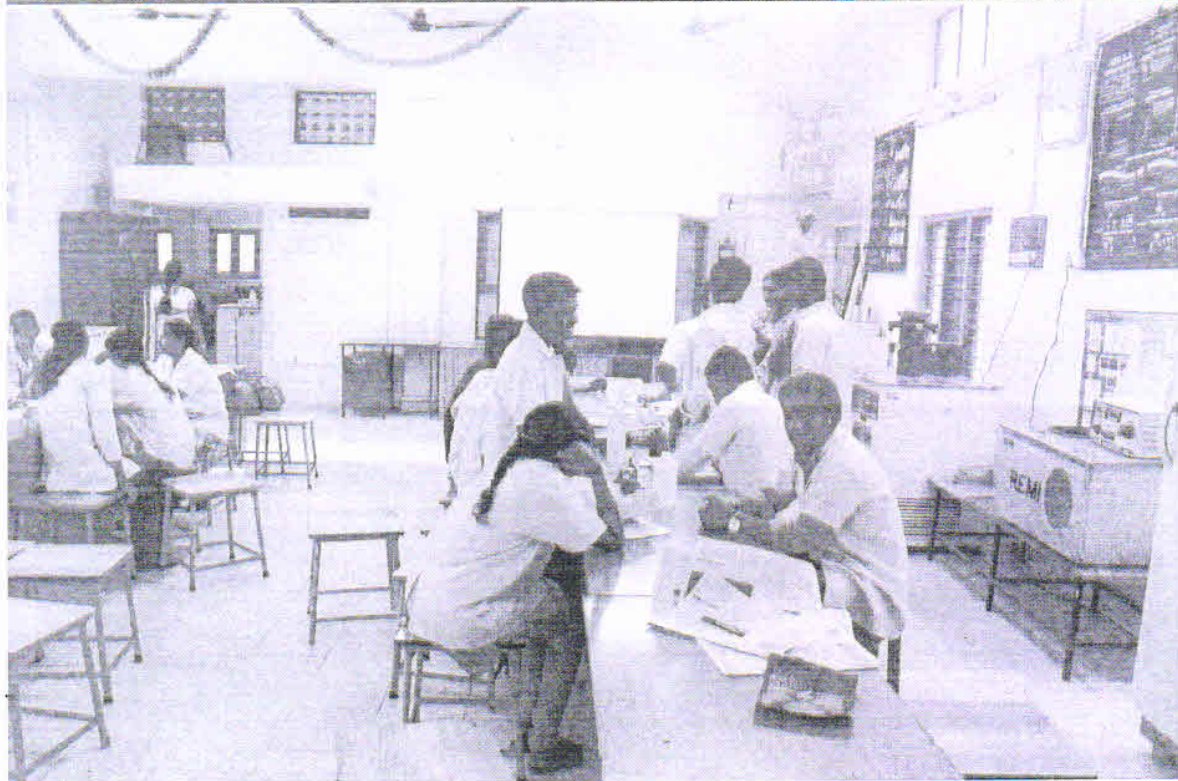
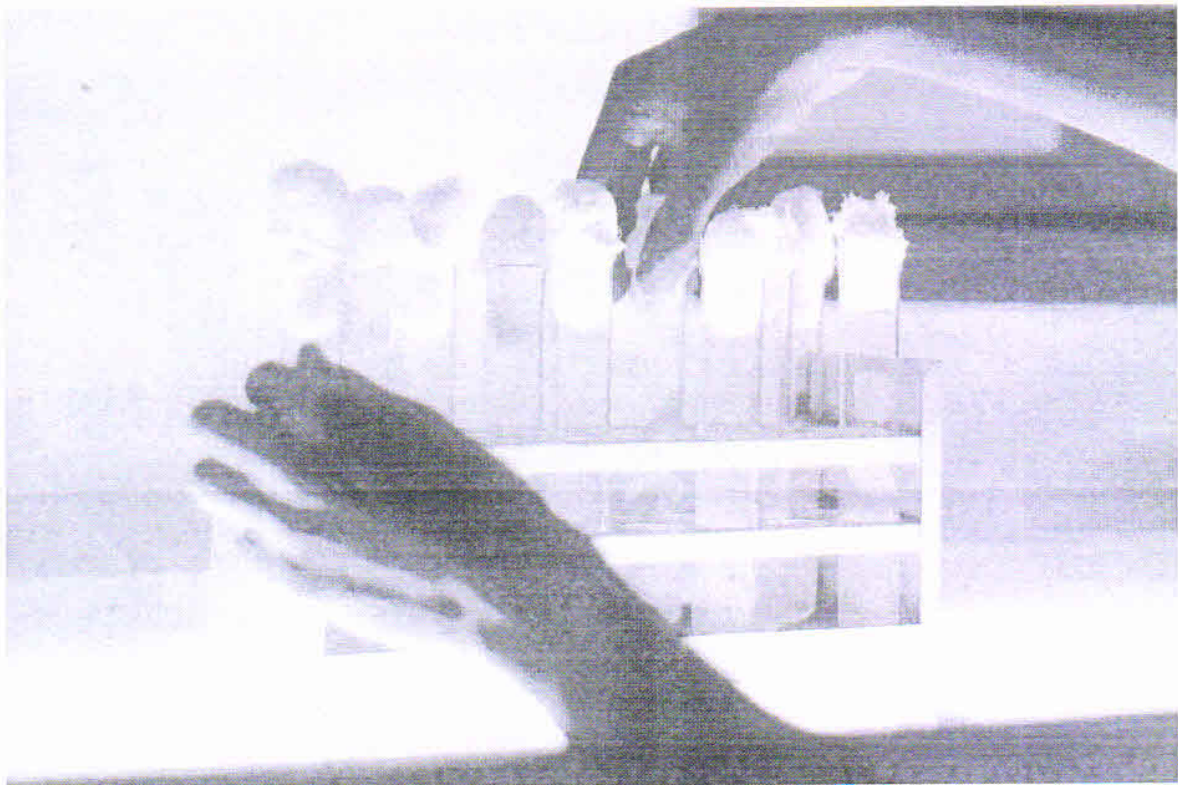

PRINCIPAL (i/c)
SOURASHTRA COLLEGE
MADURAI 625 013

5

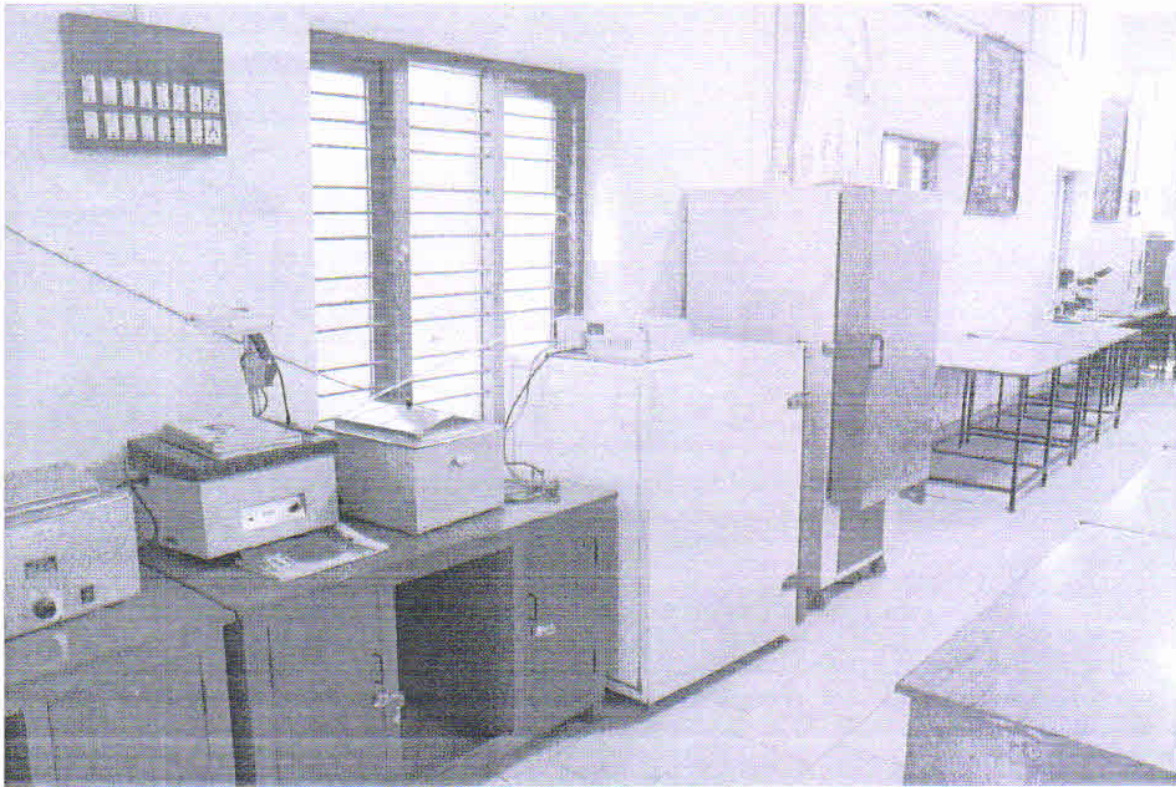
Computer Lab



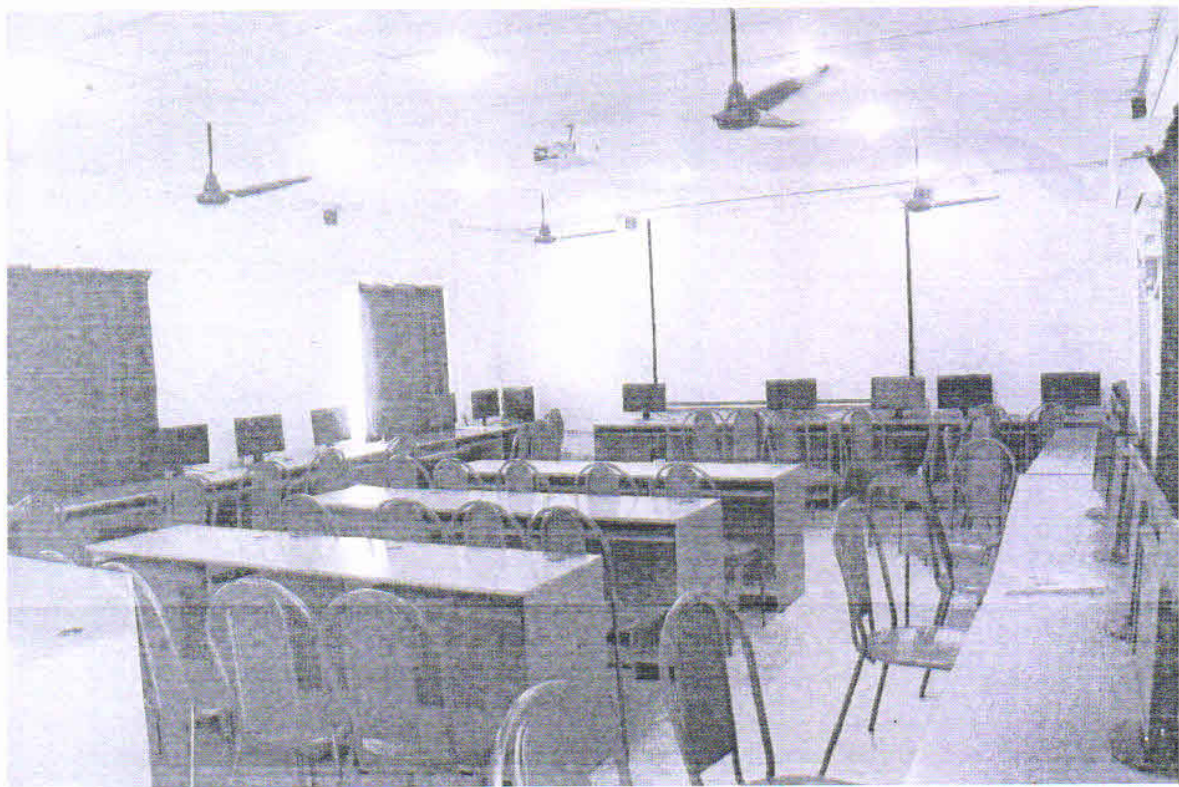
Sourashtra
PRINCIPAL (i/c)
SOURASHTRA COLLEGE
MADURAI - 625 004



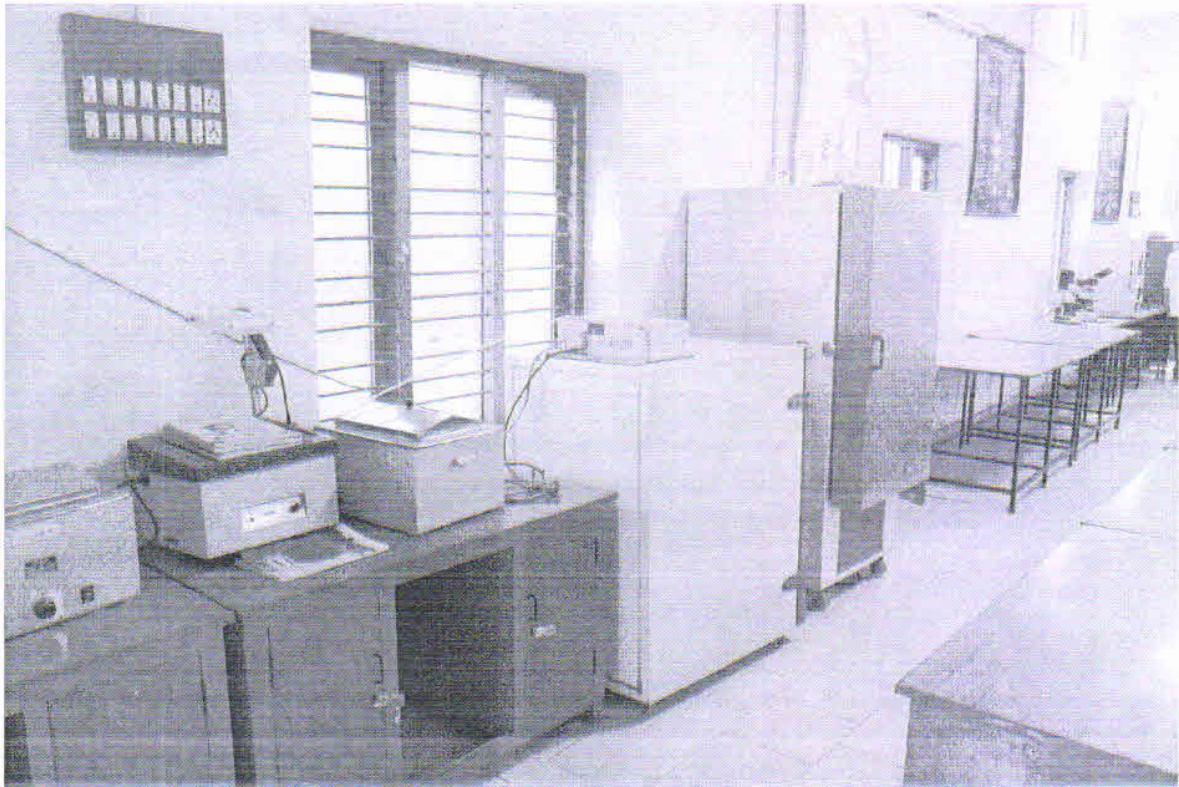

PRINCIPAL (i/c)
SOURASHTRA COLLEGE
MADURAI - 625 004




PRINCIPAL (i/c)
SOURASHTRA COLLEGE
MADURAI - 625 004



M. H. S.
PRINCIPAL (i/c)
SOURASHTRA COLLEGE
MADURAI - 625 004




PRINCIPAL (i/c)
SOURASHTRA COLLEGE
MADURAI - 625 004



Library

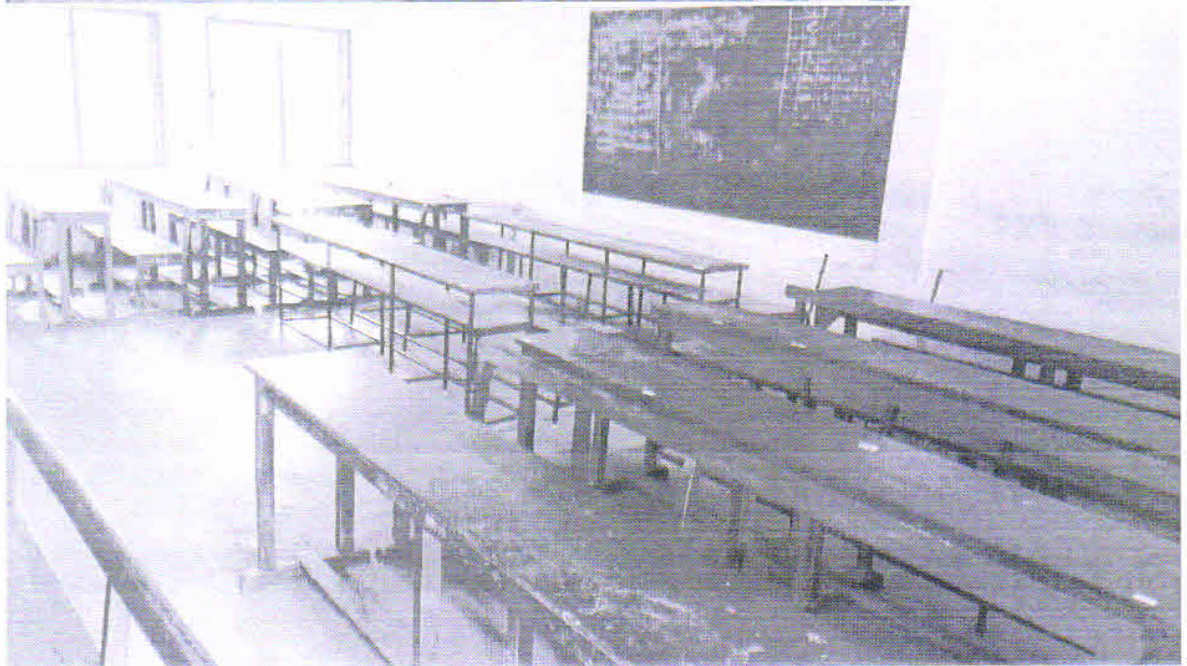
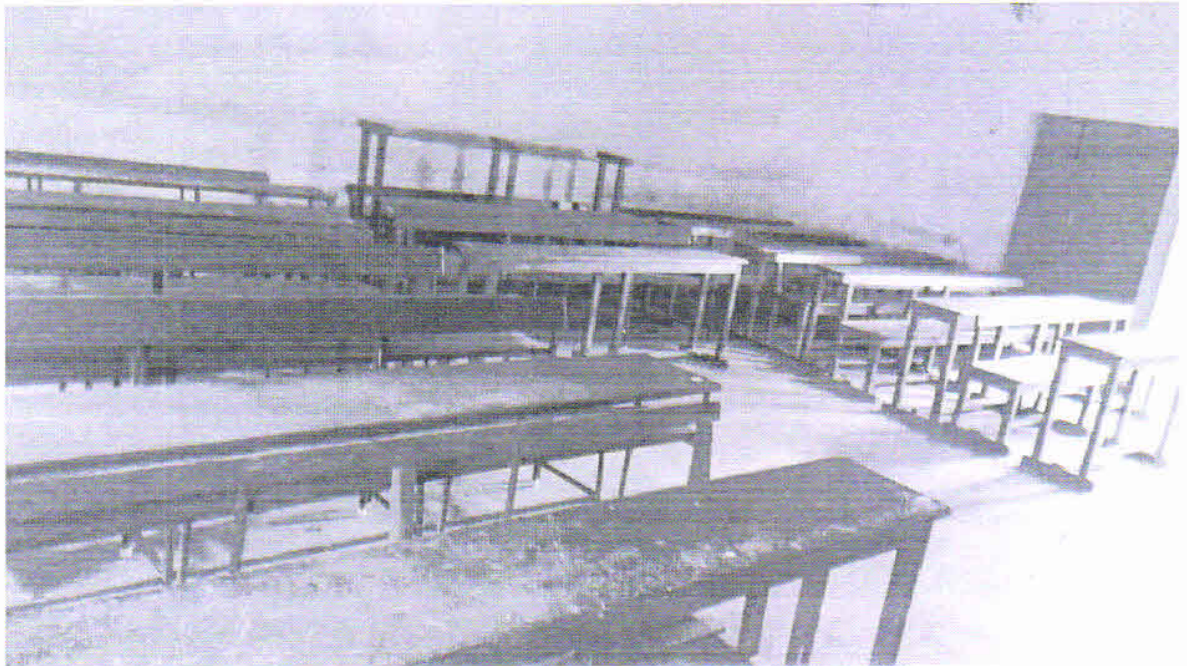


Srinivas
PRINCIPAL (i/c)
SOURASHTRA COLLEGE
MADURAI - 625 004



Srinivas
PRINCIPAL
SOURASHTRA COLLEGE
MADURAI - 625 004

Class Rooms

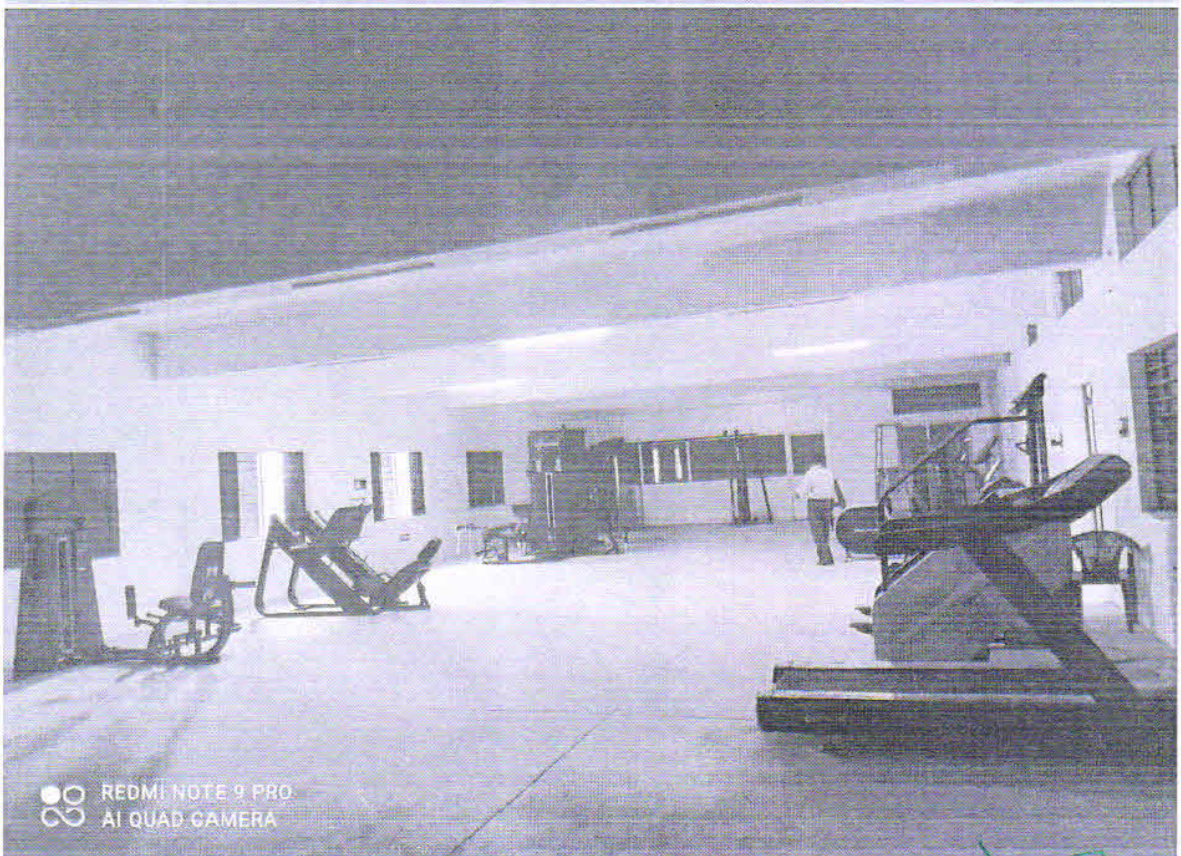



PRINCIPAL (i/c)
SOURASHTRA COLLEGE
MADURAI - 625 004

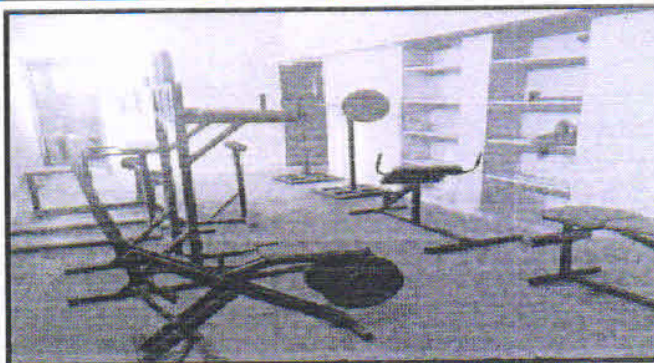
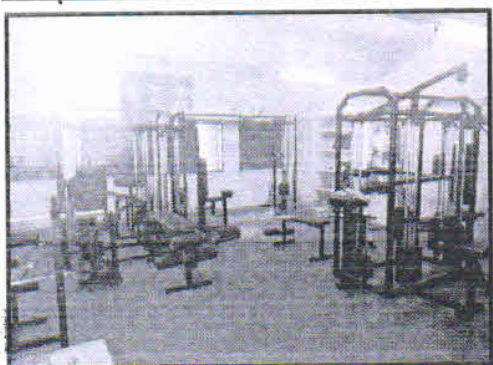
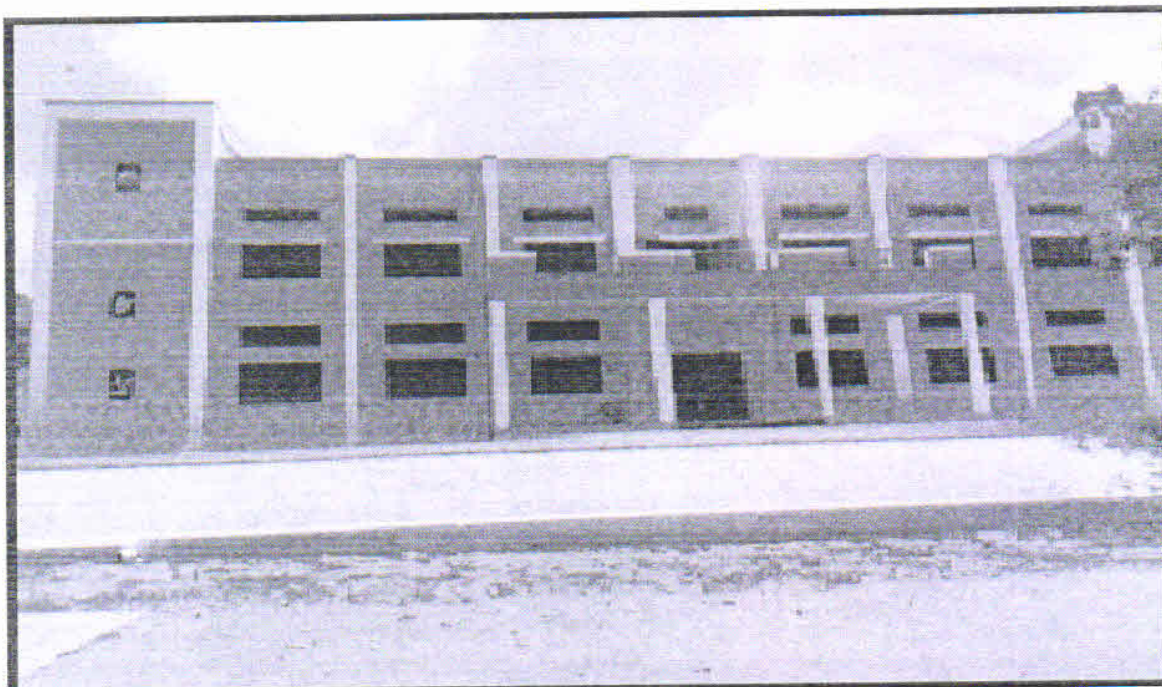


Signature
PRINCIPAL (i/c)
SOURASHTRA COLLEGE
MADURAI - 625 004

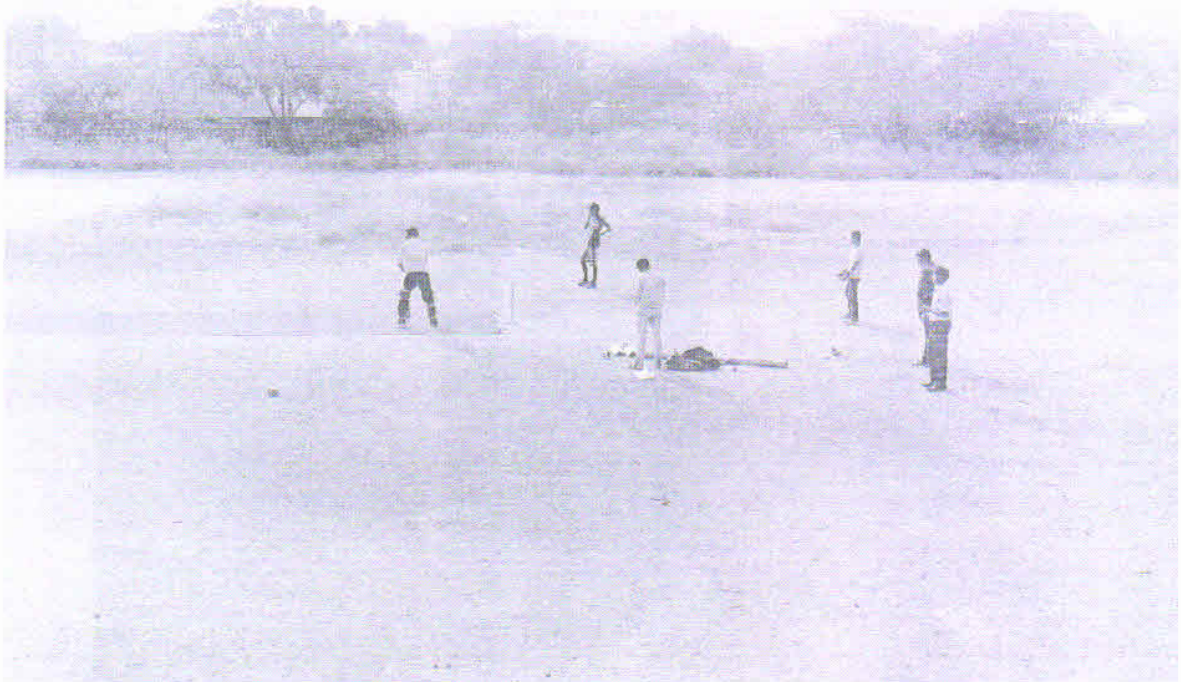
Sports & GYM



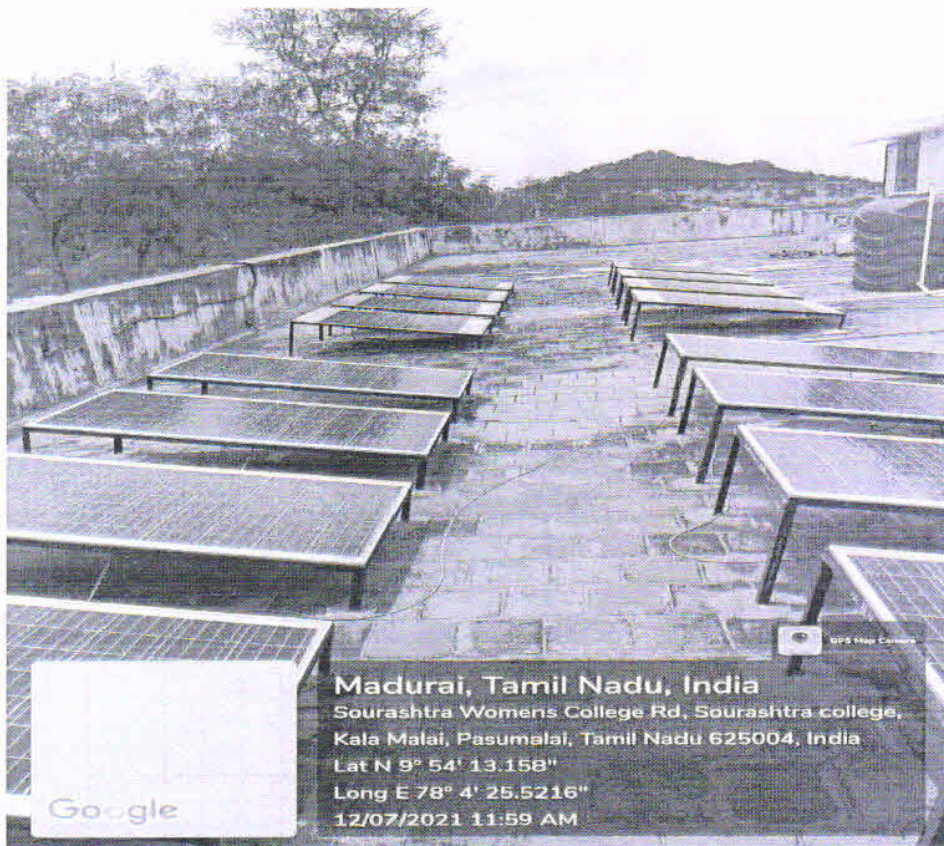
M. H. D.
PRINCIPAL (i/c)
SOURASHTRA COLLEGE
MADURAI - 625 004



Sourashtra
PRINCIPAL (i/c)
SOURASHTRA COLLEGE
MADURAI - 625 004

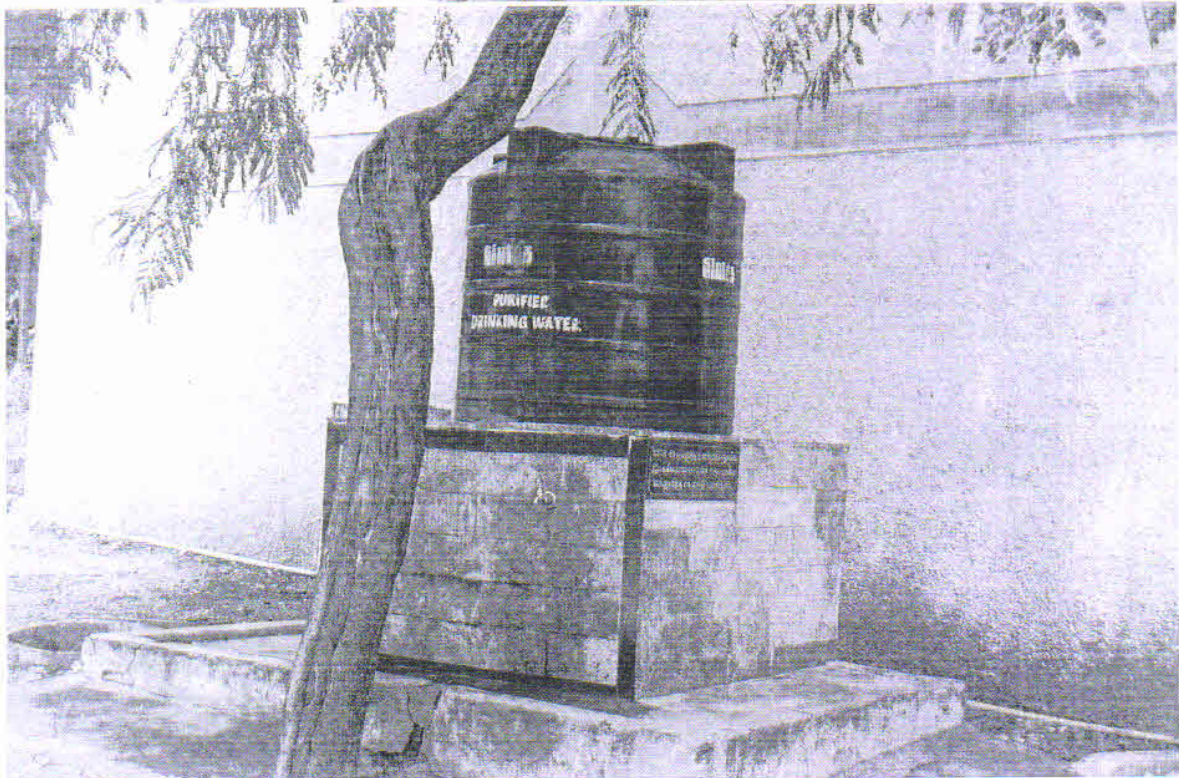


Solar Plant



Sourashtra
PRINCIPAL (i/c)
SOURASHTRA COLLEGE
MADURAI - 625 004

RO Plant



[Signature]
PRINCIPAL (i/c)
SOURASHTRA COLLEGE
MADURAI - 625 004